

PORTFOLIO: JEREMY LINDEN

Graphic Design | Web Design | Photography | Digital Imagry

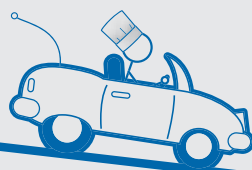




Letterhead

Am Chef...Will Travel

Personal Catering Service



Menu Front

Am Chef...Will Travel

Personal Catering Service



Am Chef Will Travel is a personal culinary service, featuring fresh creations by Mark Linden, Certified Executive Chef. We offer a variety of services including personal in home meals, gourmet catering, customized menus, and professional consultation.

Please contact Mark Linden or Sharon McCaffrey
Office 522-2766 • Cell 441-5218
Email mlinden@gei.net

Menu Inside



Additional Items

Buffet Style Lunch

Peli Style

16.00 per person

- Selection of sliced meats and cheeses, fresh breads and condiments
- Choice of two salads
- Fresh sliced fruit
- Hawaiian style chips
- Fresh baked cookies
- Chilled soft drinks and iced tea

Hot Lunch

20.00 per person

- Selection of two salads
- Two hot entrée selections
- Fresh rolls and butter
- Chef's accompaniments
- Dessert assortment
- Chilled soft drinks and iced tea



Evening Fairs

Can be either buffet style or served tableside. Personalized custom menu will be designed specifically for your occasion.

Specifes

- All trays are for 25 people and are presented from upscale, disposable cateringware.
- 72 hours notice is required in order to properly plan and prepare your order. Our minimum order is 250.00
- Delivery will be on the day of your party at a time mutually agreed upon.
- A 50% deposit is kindly requested at the time of booking with the balance due upon delivery. Payment can be made by check or cash. Credit cards are not accepted at this time.
- China, flatware, glassware, linen and service staff can be arranged at an additional fee.
- Alcoholic beverages cannot be sold by Am Chef...Will Travel at this time. It is the responsibility of the host to provide and dispense these items.

Menu Back

Great Meals...No Hassles

Am Chef...Will Travel is a personal culinary service created and operated by Mark Linden, a certified executive chef and member of The American Culinary Federation and American Personal Chefs Association. We offer a variety of services including personal in home cooking, customized private catering, and gourmet party trays.

The many benefits of our services:

- Healthily and wholesome foods cooked in your home
- Personalized menus all using the finest ingredients prepared with utmost care
- Shopping and kitchen cleanup leaving you free to enjoy your guests
- Gourmet Party Trays



Chilled Selections

Delicious Appetizer Patters

Freshly Cut Vegetable Arrangement	50.00
<i>with Roasted Garlic Spread or Pesto Dip</i>	
Domestic & Imported Cheeses with Crackers	65.00
Del'l Display	70.00
<i>Assorted Sliced Cheeses, Meats, Rolls & Condiments</i>	
Antipasto Tray	65.00
<i>Assorted Vegetables, Cheeses, & Sliced Reggiano</i>	
Assorted Gourmet Wings	75.00
<i>Including Turkey, Bacon, & Vegetarian</i>	
Baked Brie in Pull Pastry	45.00
Spanakopitas	75.00
Wild Mushroom Strudel	75.00

Poached Shrimp with Lemon & Cocktail Sauce	125.00
<i>(3 per person)</i>	
Smoked Salmon & Dill Paie	50.00
<i>with Sliced Reggiano</i>	



Hot Selections

Comes with Reheating Instructions

Roasted Herb & Garlic Crusted Tenderloin of Beef, Mushroom Ragout	175.00
<i>with Sliced Rolls & Horseradish</i>	
Almond Breaded Duckling Tenderloins	100.00
<i>with Aioli Pesto Sauce</i>	
Salmon & Bacon, Fruit Chutney	85.00
Chicken Boscettes	75.00
<i>with Thai Peanut Sauce</i>	
Shrimp & Scallops Boscettes	125.00
<i>with Lemon Herb Butter</i>	

Dessert Selections

Tempting Treats for Special Occasions

Bosonic Selection	50.00
Pecan Fours	75.00
Pumpkin Cheesecake (2 each)	60.00
Cookies	35.00
Lemon Bars	50.00
Cranberry Crumb Bars	50.00

12135 Rushwood Cir • Anchorage, AK 99516 • Phone /r

Am Chef...Will Travel

Personal Catering Service

12135 Rushwood Cir
Anchorage, AK 99516



Business Card

Am Chef...Will Travel

Personal Catering Service

12135 Rushwood Cir
Anchorage, AK 99516
Ph/Fx: 907.522.2766



Mark Linden
Sharon McCaffrey
Email: mlinden@gei.net

Envelope

Am Chef...Will Travel

Personal Catering Service

Am Chef...Will Travel is a personal culinary service owned and operated by Mark Linden and his wife, Sharon McCaffrey.

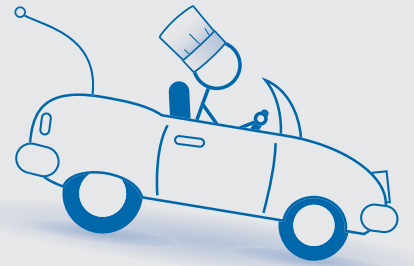
Mark is a certified executive chef and a member of the American Culinary Federation, and American Personal Chef Association.



Am Chef...Will Travel
Fine Catering Service
12135 Rushwood Circle
Anchorage, AK 99516
www.amchefwilltravel.com

Am Chef...Will Travel

PERSONAL CHEF



Mark Linden, CEC

Am Chef...Will Travel
Fine Catering Service
Phone/Fax: 907-522-2799
mark@amchefwilltravel.com
www.amchefwilltravel.com

Personal Chef Services

As a personal chef, I will prepare meals for you in your home, including shopping for the freshest ingredients, and cleanup

This can be on a bi-weekly basis, or at a schedule that works for you

The meals are selected by you for a customized menu, that can be stored in your freezer or refrigerator, for you to enjoy at your convenience

Personal chef service is great for busy people, new mothers, the elderly, the ailing, single parents

Special dietary requirements can be arranged

Gift Certificates are Available



Sample Meals

Soups

Beef or Chicken Barley
Minestrone
Corn Chowder
Clam Chowder
Seafood Chowder



Seafood

Grilled Salmon, Southwestern Spice
Baked Halibut, with Artichokes,
Olives and Tomatoes
Shrimp and Scallop Stew, with
Vegetables, Creamy Mustard Sauce
Citrus Marinated Grilled Swordfish

Poultry

Oven Roasted Chicken, Pan Gravy
Grilled Chicken Breast, Fresh Salsa
Chicken and Black Bean Tortillas
Chicken or Turkey Tetrazzini
Chicken Marbella

Beef/Lamb

Home Baked Meatloaf
Lasagna or Spaghetti
Beef Stroganoff
Lamb Stew
Roast Leg of Lamb, Mint Sauce
Pork Sweet and Sour Pork with
Vegetables
Roast loin of Pork, English Mustard
Sauce
Chinese Pork Roast, Soya Glaze
Braised Pork Chops and Sauerkraut
Pork Stew with Root Vegetables

Vegetarian

Lasagna
Couscous with Vegetables
Pasta Primavera
Cheese and Black Bean Enchiladas
Black Bean, Vegetable and Rice



Frequently Asked Questions

1. Can I afford this service?

The cost of personal chef services are very reasonable. You will have peace of mind that you have delicious and nutritious meals for your family. Mealtimes will become more relaxed among hectic personal schedules.

2. How Does it Work?

First, I will meet with you for a complimentary consultation to determine your needs. A questionnaire can be found on my website to assist you. After this, I will design a menu of five or more entrees and side dishes for your approval, along with a cooking schedule.

3. What Fees Apply?

Personal Chef Package 350.00
(Five Meals of 4 Servings Each)
Additional Meals 6.00



X-Dezyn Project:

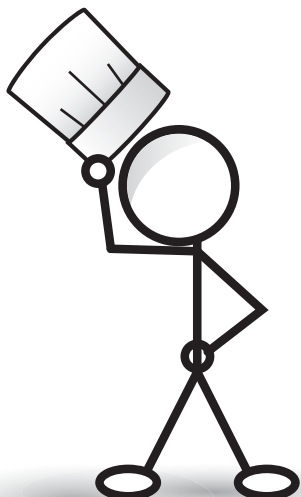
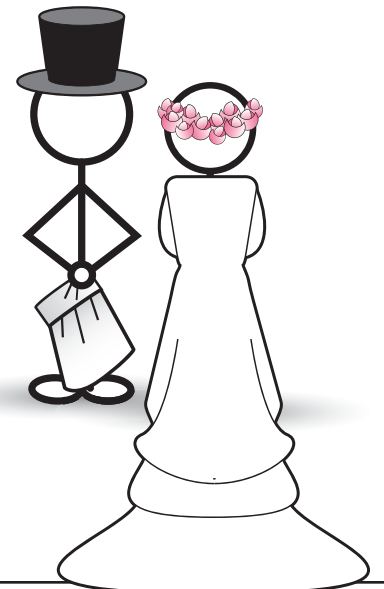
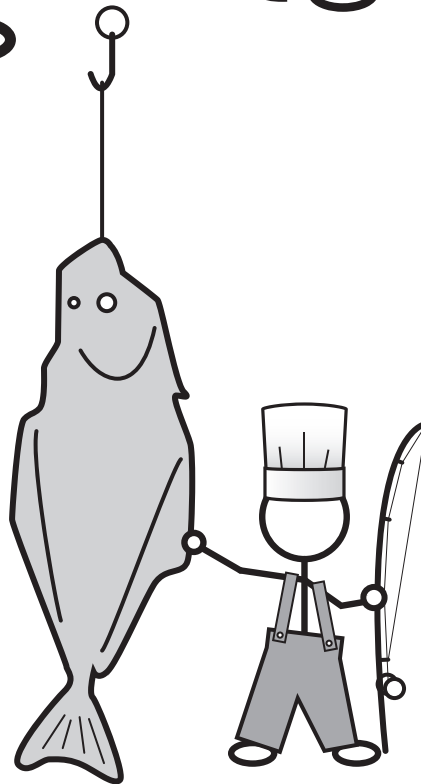
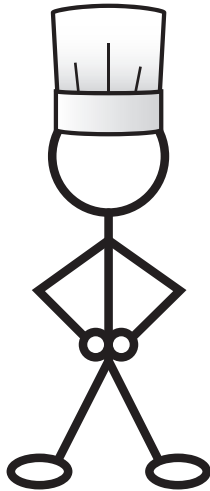
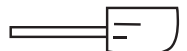
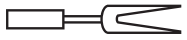
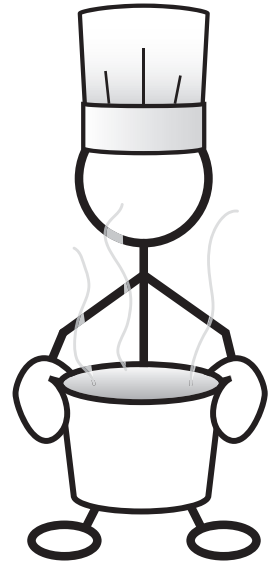
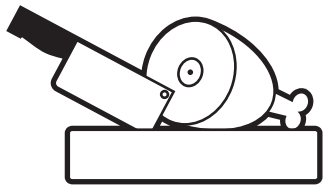
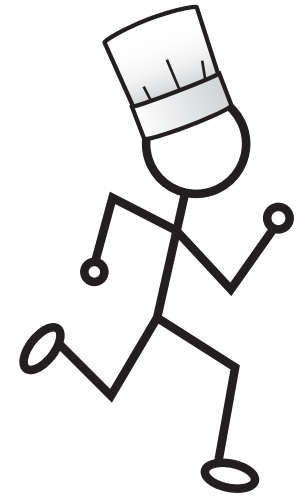
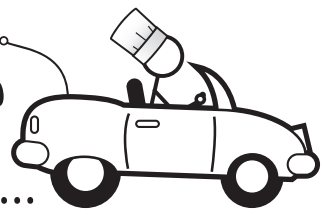
Am Chef...Will Travel
Personal Catering Service

Project Type: Print Materials

Comments: The initial printing budget was not very big, so we opted for a single color printing on a grey fleck paper or cardstock. With the menu I tried a layout that was not your typical size. Going with a oversize menu folded into something more normal made it more memorable.

Am Chef... Will Travel

Personal Catering Service



Thank You

X-Dezyn Project:

Am Chef..Will Travel

Personal Catering Service

Project Type: Logo & Branding

Comments: My goal was to create a simple, distinct and versatile brand for use in both web and print.

The Chef running was the first incarnation, but then I put him in a car to better denote the travel. many scenarios followed, mainly fueled by the different pages on the website.

The client has gotten many positive comments on his brand.

Am Chef... Will Travel

Full Service Caterer



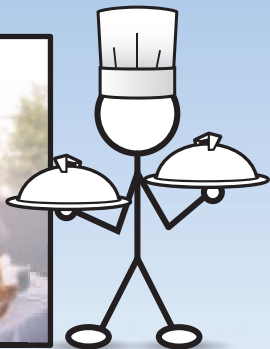
Personal Chef Service



"The duty of a chef is to create bonds of friendship across the table. I look forward to creating a memorable event for you!"

—Mark Linden CEC

Personalized Professional Service, and We'll Turn the Lights Out!



Mark Linden & Sharon McCaffrey
Phone/Fax 522-2766 | Cell: 441-5216
mark@amchefwilltravel.com
www.amchefwilltravel.com

Appetizer Ensemble 1

*artichoke & crab pate w/ sliced baguette
chilled asparagus wrapped in ham | lemon dill dip
smoked salmon puffs | kalbi beef kabobs
chicken marbella w/ fresh herbs & olive oil*



Appetizer Ensemble 2

*flavored cheese logs w/ assorted crackers
grilled vegetable antipasto display
assorted gourmet finger sandwiches | brie en crouete
sesame pork strips w/ soy dipping sauce & hot mustard | sliced rolls
sautéed cajun shrimp w/ roasted red peppers*

Appetizer Ensemble 3

*smoked duck pate w/ wild mushrooms
sourdough toast points | dijon mustard sauce | seafood salad wraps
three cheese torta with pesto & sun dried tomatoes
stuffed flank steak w/ bearnaise sauce
halibut wrapped in bacon w/ spicy tomato salsa
greek chicken with feta, scallions, & kalamata olives*



907-522-2766



The "Am Chef...Will Travel" website

X-Dezyn Project:

Am Chef...Will Travel
Personal Catering Service

Project Type: Brochure

Comments: The client wanted a more colorful, eye-catching brochure than the previous design and budget was less of a concern this time around. I used the same style as the website for continuity, and Brand Recognition (the exception being the body font which I chose for its simplicity and closeness in style to the web site's font, verdana). The photos required extensive editing to try to take away the digital photo snapshot look.





Website Shell



The Hatchet Wounds' first group photo

the Hatchet Wounds



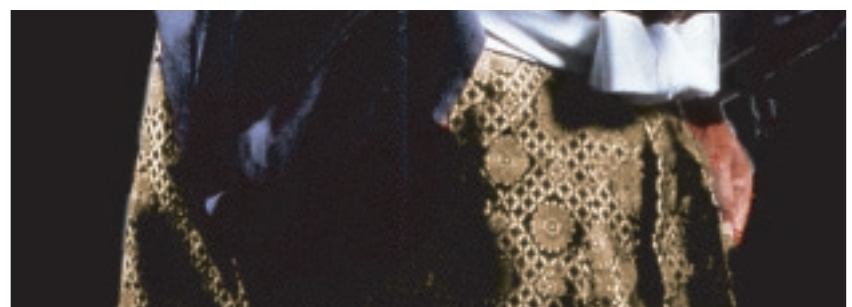
X-Dezyn Project:

Project Type: Website and Photography

Comments: The Band The Hatchet Wounds are a Rock-a-Billy, Phychobilly and Surf band. I came up with a look for their website to go along with the "zombie" theme they had decided on. I also chronicle their performances as their band photographer. They even brought me to Chicago for a gig there.

Retouch/Reconstruction Detail

Using Adobe Photoshop to Isolate, Clean Up and Reconstruct the Main Element on the "Swords of Vengeance" DVD Cover.



FROM THE DIRECTOR OF SHOGUN'S SAMURAI

Another version of the classic Japanese story of The 47 Ronin. Sonny Chiba and his Japan Action Club handle the amazing sword play in this story of the surviving retainers of Lord Asano's Ako Clan who seek bloody revenge against Lord Kiru, who caused their lord to commit hara kiri. The single best one on one duel between expert swordsmen highlights what already is an excellent example of superior swordplay.

DIRECTED BY:
Kinji Fukasaku
Shogun's Samurai
The Yakuza Papers, Battle Royale

WRITTEN BY:
Koji Takada
Tattooed Hitman, The Street Fighter
Return Of The Street Fighter

STARRING:
Kinnosuke Yorozuya
Goyokin, Incident At Blood Pass
Sonny Chiba
The Street Fighter, Kill Bill Vol. 1, G.I. Samurai
Toshiro Mifune
The Seven Samurai, Yojimbo
Tetsuro Tamba
Shogun's Shadow, Gozu
Hiroyuki Matsukata
Battles Without Honor And Humanity, Never Give Up

Running Time: 158 mins. Year: 1978
Audio: Dolby Digital 2.0 Original Mono soundtrack
Language: Japanese Subtitles: English
Anamorphic Widescreen - Aspect Ratio: 2.35:1

Special Features: Trailers
Liner notes by Patrick Macias, author of
"TOKYOSCOPE: The Japanese Cult Film Companion"



SWORDS of VENGEANCE

SWORDS of VENGEANCE

THE FALL OF AKO CASTLE



X-Dezyn Project: Swords of Vengeance DVD Cover
Project Type: Comps and Treatment
Comments: I was hired to help with some overflow from Don't Blink Design in LA. I comped several ideas and title treatments, and created the final after the client choose the one they liked.
The actual final was tweaked a little.

Top: Final Piece; Middle: Comps; Bottom: Screenshots to Use on the cover
Opposite Page: The original poster and the cleanup I did to get the center image.



Simple 5 page Website



Updated Design



Previous Design



Sponsor Proposal Cover

Eleventh Annual Great Kitsap Duck Race Adoption Papers



Duck Adoption Ticket

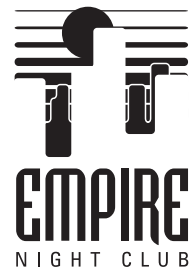


X-Dezyn Project:

Great Kitsap Duck Race

Project Type: Logo Redesign Web & Print Media Design

Comments: This was a Pro Bono project. Three years in a row I laid out the sponsor proposals, adoption tickets and website for the Rotary Club of Silverdale's annual fundraiser.



EMPIRE
NIGHT CLUB

Presents our
Sunday Soaker!!



BEER BUST!!

\$5.00
Bottomless
Domestic Beers!!
6:00 pm to midnight

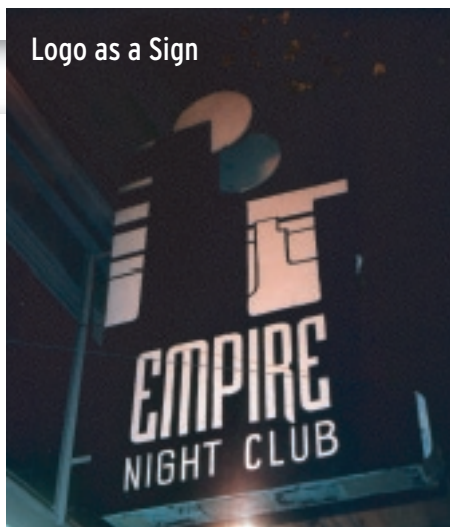
***Note:** Due to state law and the safety of our guests, we reserve the right to limit alcohol service to guests that appear intoxicated.

Party with us on Sunday, enjoy Pop nad Rock music Videos, Food ,Friends, and fun!!

Transportation services available all night
***Drink Responsibly*DON'T DRIVE!!**

113 Pacific Ave • Bremerton, WA 98337 360 457 0808
Located one block from the Bremerton / Seattle Ferry Terminal

Logo as a Sign



EMPIRE

NIGHT CLUB

113 PACIFIC AVE.

BREMERTON WA 98337

PH: 360.475.0808



EMPIRE
NIGHT CLUB

PH: 360.475.0808
113 PACIFIC AVE.
BREMERTON WA 98337

VIP

• Bring in this card for free admission •



EMPIRE
NIGHT CLUB

113 PACIFIC AVE.

BREMERTON WA 98337

PH: 360.475.0808



ELECTRONICS & TECHNO

Wednesday Night

The Empire welcomes the Northwest's best guest and local D.J.'s to Bremerton EVERY Wednesday night

Happy Hour 6:00 pm - 9:00 pm
\$1.50 wells and \$1.50 domestic beers.

The Empire, in association with Product Entertainment, presents a very special night of live D.J.'s mixing the latests vinyl from around the world!!

House, Breaks, Drum and Bass, Trance, Speed Garage & Jungle.

All guests must present a valid I.D. (21 and over only). A \$5.00 cover charge is collected to pay our guest D.J.'s. Guests traveling from Seattle may present ferry ticket stubs for reduced admission.



EMPIRE
NIGHT CLUB

FEATURING
DJs Spinning on 10,000 Watts of Power
Live Entertainment
Full Cocktail Lounge
Open After Hours

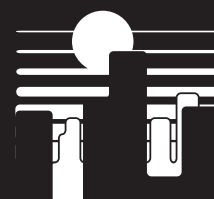
PH: 360.475.0808

113 PACIFIC AVE. • BREMERTON, WA 98337

Phone Book Ad

VIP Card

Business Card



EMPIRE
NIGHT CLUB

PH: 360.475.0808

113 PACIFIC AVE.

BREMERTON WA 98337

• Live Entertainment • Full Cocktail Lounge •
• D.J.'s Spin Wed-Sun • Open Afterhours for Dancing •
• Located one Block from the Ferry Terminal •

The EMPIRE Nightclub

10,000 Watts of Sound Pressure

Roboscan Intelligent Lighting

Digital Visual Effects

1,000 sq ft of Multi-Level Dance Floor

Two Full Cocktail Bars on Two Levels

Live Entertainment

24 Hour Info Line

360.475.0808



Flyer

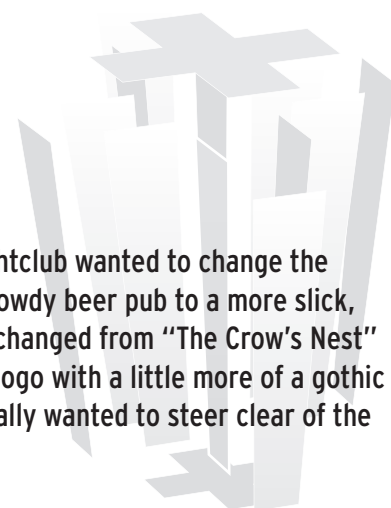
Letterhead

X-Dezyn Project:

EMPIRE
NIGHT CLUB

Project Type: Logo & Flyers

Comments: The owner of the Empire Nightclub wanted to change the direction of his club from a rowdy beer pub to a more slick, underground dance feel. He changed from "The Crow's Nest" to "Empire" and I created a logo with a little more of a gothic feel to it. With the flyers I really wanted to steer clear of the "rave flyer" look.



The Icon Group LLC.

 2916 NW Bucklin Hill Road, #178
 Silverdale, WA 98383 USA
 Tel: (360) 697-7880
 Fax: (360) 697-7886
 AmericanIcon@iconsummit.com
 www.IconSummit.com

C. Philip Slaton

Jeanne C. Slaton
 Bucklin Hill Road, #178
 Silverdale, WA 98383 USA
 Tel: (360) 697-7880
 Fax: (360) 697-7886
 IconRec@iconsummit.com
 www.IconSummit.com


FOREIGN RECRUITING CONSULTING

The Icon Group

 Excellence in Event Planning & Management
 2916 NW Bucklin Hill Road, #178
 Silverdale, WA 98383 USA
 www.GlobalCareerQuest.com
 www.NCLEXTestingRetreat.com

Tel: (360) 337-7887
 Fax: (360) 337-1051
 Email: icon1@donobi.net

KOREAN NURSES
 On the ground in America and U.S. Licensed



Total Cost: \$9,975.00 per Nurse!
 Why pay more? Why pay \$10,000.00 to \$20,000.00 for an international nurse?

The \$9,975.00 per Nurse includes the following:

- On your Campus & working as an RN 3 months after you hire them, not 18 to 24 months after hire.
- NCLEX-RN® Passed. Paid for by Korean Nurse.
- English Language School Passed. Paid for by Korean Nurse.
- IELTS Passed. Paid for by Korean Nurse.
- Airfare to America. Paid for by Korean Nurse.
- Interview them in America, not Korea.
- Ready for Endorsement Licensing to your state.
- Visa and Immigration Fees to the U.S. Government.
- Visa Screen Fees.
- Visa and Immigration Lawyer Fees.
- Recruiter Fees.
- 24-Month Employment Guarantee, not 90 days.
- 100 coming to America in Feb 2005, 100 more every 3 months thereafter. Sign-on now!

The Icon Group
 2916 NW Bucklin Hill Road, #178 - Silverdale, WA 98383 USA
 Tel: (360) 697-7880 - Fax: (360) 697-7886
 Email: AmericanIcon@iconsummit.com - www.iconsummit.com

NCLEX-RN® is a registered trademark of the National Council of State Boards of Nursing, Inc. (NCSBN). The Icon Group and NCLEX are not affiliated to employ. The Icon Group uses the acronym NCLEX-RN® solely for reference purposes and does not intend to imply endorsement of The Icon Group and/or its services to NCLEX.

The Icon Group
 Foreign Nurse Recruiting Consultants

"THE EPIPHANY PROGRAM"

- Icon pays full costs of staging the "Coverage Class" Interviews and Hiring Job Fairs in Canada, Rome, Madrid or Cabo San Lucas.
- No increase in Icon's recruiting fee.
- Icon guarantees immigration approval within 12 months.
- Icon pays for USMLE testing and guarantees Candidate's passage. All candidates submitted to Client - Hospitals for pre-screening are USMLE passed.
- Icon pays full round trip air fare to fly all pre-screened Nurse Candidates to Canada from Philippines, to Rome from Croatia, to Madrid in Spain and to Cabo San Lucas in Mexico for the Interview and Hiring Job Fair Event to be held in Canada. Live Interviews in Manila, Madrid, Rome and Cabo San Lucas available or by satellite from these cities.
- Icon pays the hotel costs for all Nurse Candidates.
- Icon pays for meals for all Nurse Candidates.
- Icon pays the cost of the Visitor's Visa for all Nurse Candidates.
- Icon pays a \$150.00 stipend for all Nurse Candidates for test re-takes and expenses.
- Candidates will sign 18-month employment contract.
- Icon will manage and guarantee passage of FEEL, TSI and NCLEX by hired foreign educated Nurses.
- Minimum Interview and Hiring Event size 30 Nurses held for 1 or 2 hospitals. Maximum size is 150 Nurses held for 1 to 2 hospitals.
- Interview and Hiring Events for Filipino in Canada with 6-month notice for visitor visas.
- Interviews and Hiring Events for Croatian Nurses in Rome with 3-month notice.
- Interview and Hiring Events for Spanish Nurses in Madrid with 3-month notice.
- Interview and Hiring Events for Mexican Nurses in Cabo San Lucas with 3-month notice.
- NCLEX Testing Preparation and Review for all foreign Nurses brought to the United States with 3 months notice.
- Alternative - 2-Way Satellite Live Interview also available to those applicants in the World (no need to travel).

The Icon Group
 Excellence in Foreign Recruiting and Job Fair Management
 2916 NW Bucklin Hill Road, Silverdale, WA 98383 USA
 Jeanne C. Slaton, Principal (360) 337-7887
 C. Philip Slaton, Principal (360) 337-7887
 Office Use (360) 337-1051
 E-Mail: icon1@donobi.net
 Website: www.globalcareerquest.com

**I Have Returned For Nurses!
 FULL NURSING EMPLOYMENT IN AMERICA SHALL RETURN!**



Guaranteed 24-month Employment Contracts.

Placing Internationally Educated Nurses in American hospitals by way of the F-1 (Student Visa) to EB-3 (Green Card) Permanent Resident conversion. Placements are not subject to Visa Retrogression. All Nurses are NCLEX-RN® Passed, U.S. Licensed and IELTS Passed. Fully sponsored employment. "Option" programs available. Cost effective and Safe International Recruiting. Recruiters since 1956.

On-line NCLEX-RN® and CDPNS Diagnostic Testing for all of your new hires

"Your Recruiting Experience Begins With Ours!"

The Icon Group LLC
 The Icon Group, LLC
 2916 NW Bucklin Hill Road, #178
 Silverdale, WA 98383
 Telephone: 360-697-7880 • Fax: 360-697-7886
 Please respond by email to: AmericanIcon@iconsummit.com
 Website: www.iconsummit.com

NCLEX-RN® is a registered trademark of the National Council of State Boards of Nursing. Content herein is Copyrighted © 2004, 2005 by The Icon Group. All Rights Reserved.


The Icon Group


 Excellence in Foreign Recruiting & Job Fair Management
 www.GlobalCareerQuest.com

THE ICON GROUP
 2916 NW Bucklin Hill Road, #178, Silverdale, WA 98383 (360) 337-7887
 E-mail: icon1@donobi.net

- Foreign Educated Nurses on 24-month traveler contracts. Call Toll Free (800) 726-6480 press #1
- Foreign Educated Nurses on traditional recruiting contracts. Call Toll Free (800) 726-6480 press #2
- NCLEX® Testing Retreat – 16-day immersion NCLEX® testing preparation in the US for foreign and domestic educated Nurses. Guaranteed passage. Call Toll Free (800) 726-6480 press #3
- Job Fairs for all Healthcare Professions – Seattle, WA and Vancouver, BC Canada. Call Toll Free (800) 726-6480 press #4

White Papers on each service available upon request
*NCLEX is a registered trademark of the National Council of State Boards of Nursing, Inc.

The Icon Group

 Excellence in Foreign Recruiting and Job Fair Management



NCLEX®
 ...Guaranteed Passage

X-Dezyn Project:  **The Icon Group**

Project Type: Identity and Direct Mail

Comments: The Icon Group is a Foreign Nurse Recruiter who uses postcards to promote their international services to hospitals nationwide. Over the past 3 years I have been working on their mailers and web ads. I initially designed their website, but they moved to a different, more full-time designer.



The Venue will be located at the north end of Bremerton's successful "Gateway Project," now hailed as the threshold of the city. As part of the ongoing drive to revitalize the City of Bremerton, The Venue is intended to be in the heart of Bremerton's historical Charleston District. Perceived as a somewhat economically depressed business area of the city. It will serve as a starting point in the pursuit of upgrading the cosmetics and backbone of the neighborhood.

We hope that by reintroducing constructive culture to the area and working in conjunction with local businesses (such as the Charleston Theater) together we can achieve many goals. One such goal is to bring people and business back to Bremerton. We wish to provide a multi-purpose, state of the art facility for all Bremerton residents and the residents of Kitsap County to use and enjoy.

With various areas of creative disciplines to support, the Venue will focus on the visual arts, both traditional and modern, as well as the musical arts, the performing arts and the culinary arts.

The Venue will be able to provide a full spectrum of entertainment and dining pleasures. As a state of the art facility, the Venue is expected to attract National level entertainers, coupled with a full kitchen and banquet facility it will be enabled to cater to the diverse entertainment needs of the residents of Bremerton and it's surrounding communities.

Educational opportunities will be available as well, in the form of internships in the various fields of creativity the Venue will support. If possible, the Venue would like to team up with Olympic College and offer credits and practical, hands-on experience to students in relative fields of study.

Such an encompassing approach for this project will have support staffs that will help Bremerton further, making employment available to low income and disadvantaged people living in such an area would be welcome in any community.

the Visual:
Support for the visual arts will be in the form of offering gallery wall space throughout the facility for local artists to show and sell their works. There will also be creative seminars and ongoing classes in the visual arts disciplines available at low or free of charge to those who qualify according to income.

the Audio:
Support for the audio arts will be in various forms, such as, offering a large professional stage with full sound and lights for the use and enjoyment of local musicians. Also offered will be seminars and labs in the use of instruments, equipment and stage presence at low or free of charge to those who qualify according to income.

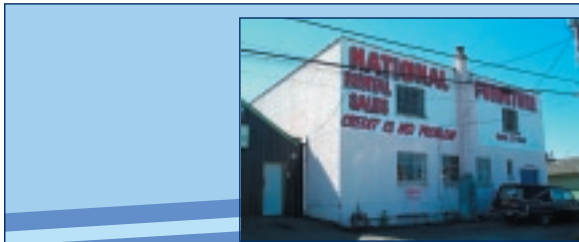
the Performing Arts:
Support for the Performing arts shall be in the form of offering a large professional stage with sound and lights for the use and enjoyment of performing artists, from an intimate one person spoken word performance, to a full troupe play production. Also offered will be seminars and classes in the performing arts, by local and national artists in the field.

Support the Venue; an original idea for making Bremerton a better place to live!



The existing layout of the building is ideal for a multi-discipline performing arts center. Its open 4200 sq ft main floor and 1500 sq ft upper mezzanine can fit a large audience or host a tastefully presented art show.

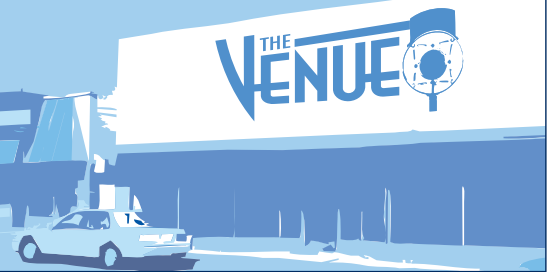
17" x 3.66" brochure folds to 8.5" x 3.66"



Photography, Design and Layout by:



The Venue is an exciting new arts center project for the city of Bremerton. Administered by a non-profit corporation utilizing both public and private funding, the Venue will be an arts center for the use and enjoyment of the creative community of Bremerton.



Logo

Letterhead



116 North Callow Ave • Bremerton, WA 98312 • 360.440.4553



Poster

X-Dezyn Project:



Project Type: Logo & Assets

Comments: A non-profit organization for the arts was looking for funding and needed a brand and some printed materials to get underway. They had a building in mind so I shot it and created logo to put on the wall as part of the background images.

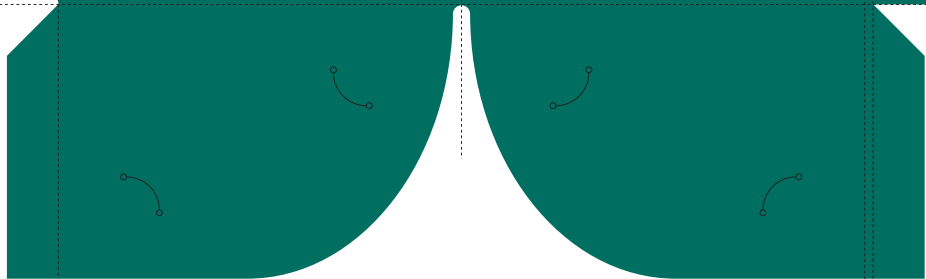
Folder Outside



14976 Sandy Hook Rd.
Poulsbo, WA 98370
206-282-4633
or 360-598-4311
www.kianalodge.com

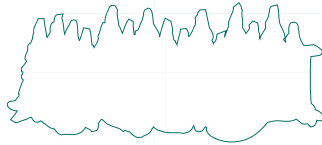


*A Moment in Time
is a Memory for Eternity*



An Authentic Northwest Experience of Hospitality and Tradition

Starting with the Suquamish descendants of Chief Sealth, Kiana has been entertaining distinguished guests with traditional alder-roasted salmon dinners for over 200 years. Located on Agate Passage, just across from Bainbridge Island, Kiana's sandy beaches are still carpeted with white clam shells left by generations of Native Americans who inhabited the original Suquamish village where Chief Sealth lived, just two miles north. (Seattle was named after this famous Chief.)



In the 1930s, Seattle area residents seeking a summer escape discovered the area's sandy beaches and built a colony of summer homes on the North Kitsap Peninsula. This community built a log lodge clubhouse, known as the Edgewater Beach and Country Club, and later was known as the Sandy Hook Park Club. The lodge clubhouse was the focal point for gatherings of all ages, with food, drink, games, dancing and outdoor activities including canoe jousting in the lodge's natural salt water lagoon. It was then fashionable to escape the city to this rustic, natural setting, and many arrived by the famous "mosquito fleet" passenger steamers to the lodge's own deep-water dock. World War II interrupted this pre-war "paradise", as the members of the beach club called it, and the lodge became the housing for the 14th Coast Artillery. When the lodge was purchased in 1946 by a private party, it was given the name "Kiana" which means "Garden of the Gods" in the Native American language.

Traveling to this jewel of Puget Sound is an easy and pleasurable journey as guests arrive via chartered boats or private yachts directly to our deep-water dock or by land via coach or private vehicle. Weddings, receptions, retreats, reunions and corporate events are catered to groups up to 1,000 in either the historic Main Lodge or in the open-beam Garden Atrium. You may also plan your next Holiday party or winter meeting at Kiana...feel the warmth of a crackling fire in the Moose Room as you sip a glass of wine or a mug of mulled cider. Kiana's signature salmon dinners complimented with our specially customized menus offer you and your guests a true taste of the northwest.

Our extensive gardens and grounds display seasonal flowering plants and are especially spectacular during the spring, summer and autumn months. Pamper your guests in the serenity of this private six acre waterfront haven, stroll the beach, enjoy a bonfire or just wander amid the tall fir and fragrant cedars.

Experience Kiana, where time stands still and memories are born!



Folder Inside





Old Logo



New Logo



Ad for "The Knot" Magazine



Brochure

For more than 100 years, Kiana Lodge has been entertaining with traditional alder-roasted salmon, Native American language, and beaches of Agate Passage. Visit the carpet of clam shells left by the Americans who inhabited the village just two miles north. The Chief Sealth lived and Seattle was named.

Pamper your guests in the six acre waterfront haven where you can enjoy a bonfire or just wander among our fragrant cedars and enjoy the beauty of our extensive gardens.

"Where Time Stands Still"
Memories are made here.

In the 1930's, Seattle area residents discovered the beaches and built a colony of the North Kitsap Peninsula. The log lodge clubhouse, known as Beach and Country Club, and renamed the Sandy Hook Park Club. The lodge clubhouse was the focal point for gatherings of all ages, with food, drink, games, dancing and outdoor activities including canoe jousting in the lodge's natural salt water lagoon. It was then fashionable to escape the city to this rustic elegance in a natural setting, and many arrived by passenger steamers from Seattle.

World War II added to the lodge's history as the members of the lodge became Artillery. When the lodge was purchased by a private party, it was renamed Kiana, which means "Garden of the Gods" in Native American language.

Booking Information

Kiana's staff works with you to firm up the menu, price and all details. A contract, with an approximate number of guests, is then sent to you to sign and return with your deposit. This deposit is a confirmation of your date. Unless requested otherwise, final payment is sent after the event and due within 30 days.

Menus: Suggested or customized menus are available for all kinds of events. Prices vary depending on the items selected. All meals are prepared by our own catering department. No outside catering please.

Service: Our standard table setting is served on round tables for eight, and includes china, silverware, glasses, salt and pepper.

Guest Count: Since we prepare food & seating per person, we require that a firm guaranteed count must be called into the Kiana business office within five working days before your event, but can be increased up to two days before the event. Since buying and billing is based on this final count, we cannot decrease the count, after the food is ordered, but can always increase. We also request that one or two entrees only be chosen for your group (This does not include a vegetarian plate).

Bar & Beverages: We are a licensed wine and beer facility only, offering our own assorted beverage stock with our own label wines (a beverage list is available per request). There is a flat fee for each Bar Set-Up and for each Bartender. We determine how many bars / bartenders are needed, based on your guest count. We can also offer Wine Stewards; price quoted upon request.

All Loud Or Amplified Music must be confined to the Main Lodge only.

The Squamish Tribal Government limits instruments which may be played outdoors or in the Garden Atrium building to acoustic piano, flute, harp, violin and guitar and may not exceed permissible levels of noise.

We accept credit cards, personal checks or cash.
We are Washington State Sales Tax Exempt.
Shuttle service is available from both the Bainbridge and Kingston ferries. Limo service may be available.
Unlimited parking is available at the Squamish Clearwater Casino with shuttle service to Kiana.

Whether you are booking a wedding, corporate event or a social gathering, Kiana Lodge and it's staff promise a memorable event.

To request more detailed information please call:
206-282-4633 or 360-598-4311
www.kianalodge.com

Business Card



LUTHER F. MILLS, JR.
General Manager

14976 Sandy Hook Rd.
Poulsbo, WA 98370

Ph: 206-282-4633
or 360-598-4311
Fx: 206-282-2129

VISIT US ON THE WEB AT
www.kianalodge.com

info@kianalodge.com

X-Dezyn Project:

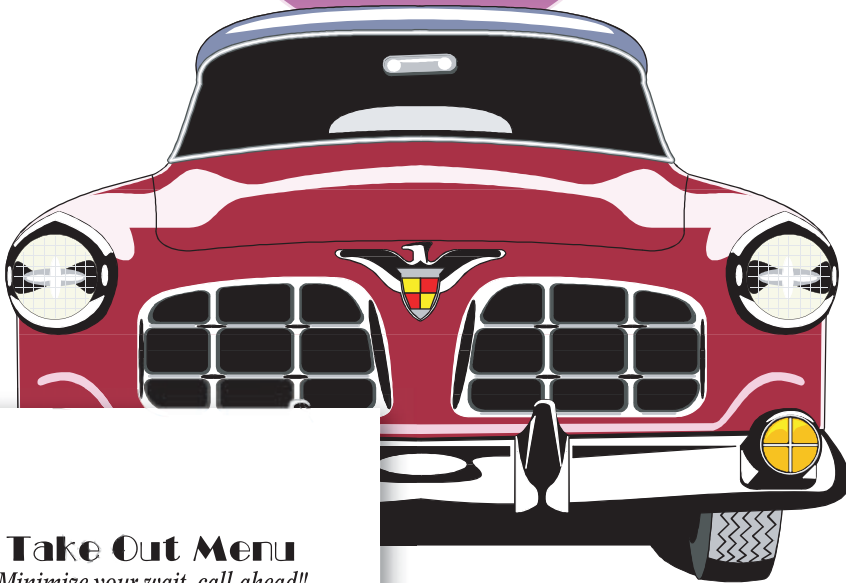


Project Type: Logo Update and Information Packet

Comments: Kiana Lodge's old logo didn't reflect the beauty of the gardens at this premiere wedding destination. I didn't want to throw the whole thing out and waste what brand recognition it had so I chose a more appropriate font and kept the basic idea. The info packet was my first die cut design. Unfortunately the printer couldn't get the stock we wanted and due to time constraints we couldn't re-choose colors to fit it better.

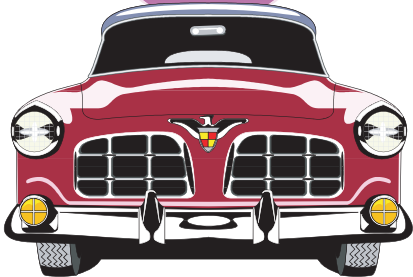
Downtown Bremerton at
5th & Park Avenue

Park Avenue DINER



Take Out Menu
Minimize your wait, call ahead!!

Park Avenue DINER



Downtown Bremerton at
5th & Park Avenue

417 Park Avenue · Bremerton, WA 98337
(360) 377-2457

Bremerton, WA 98337
377-2457

Breakfast Served all day!!

Fast Entrees with Hot Cakes or Potatoes and Toast

..... 6.25
..... 6.25
..... 9.25

Combinations

..... 3.99
..... 3.75
..... 4.25
..... 4.95
..... 5.50

Entrees with Potatoes and Toast

..... 5.95
..... 7.25
..... 7.25
..... 7.25
..... 7.75
..... 7.95
..... 7.95
..... 7.95

Park Avenue DINER

Downtown Bremerton at
5th & Park Avenue

Sally Jo Smith
Owner

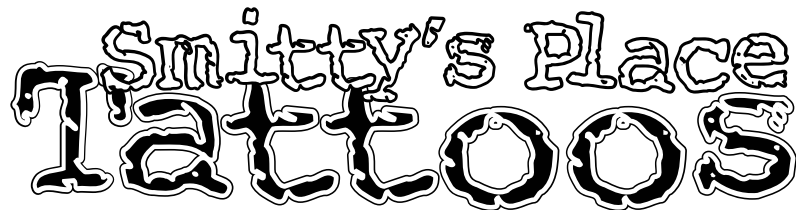
417 Park Avenue
Bremerton, WA 98337
(360)377-2457

X-Dezyn Project:

Park Avenue DINER

Project Type: Logo & Menus

Comments: This was a budget project for a small 50's style diner. They had really bad Word Menus and no central brand to work with.



Project Type: Assorted Logos

Comments: Here are several logos developed over the past few years. Some are in use, others were comps or logos for companies that didn't start up.



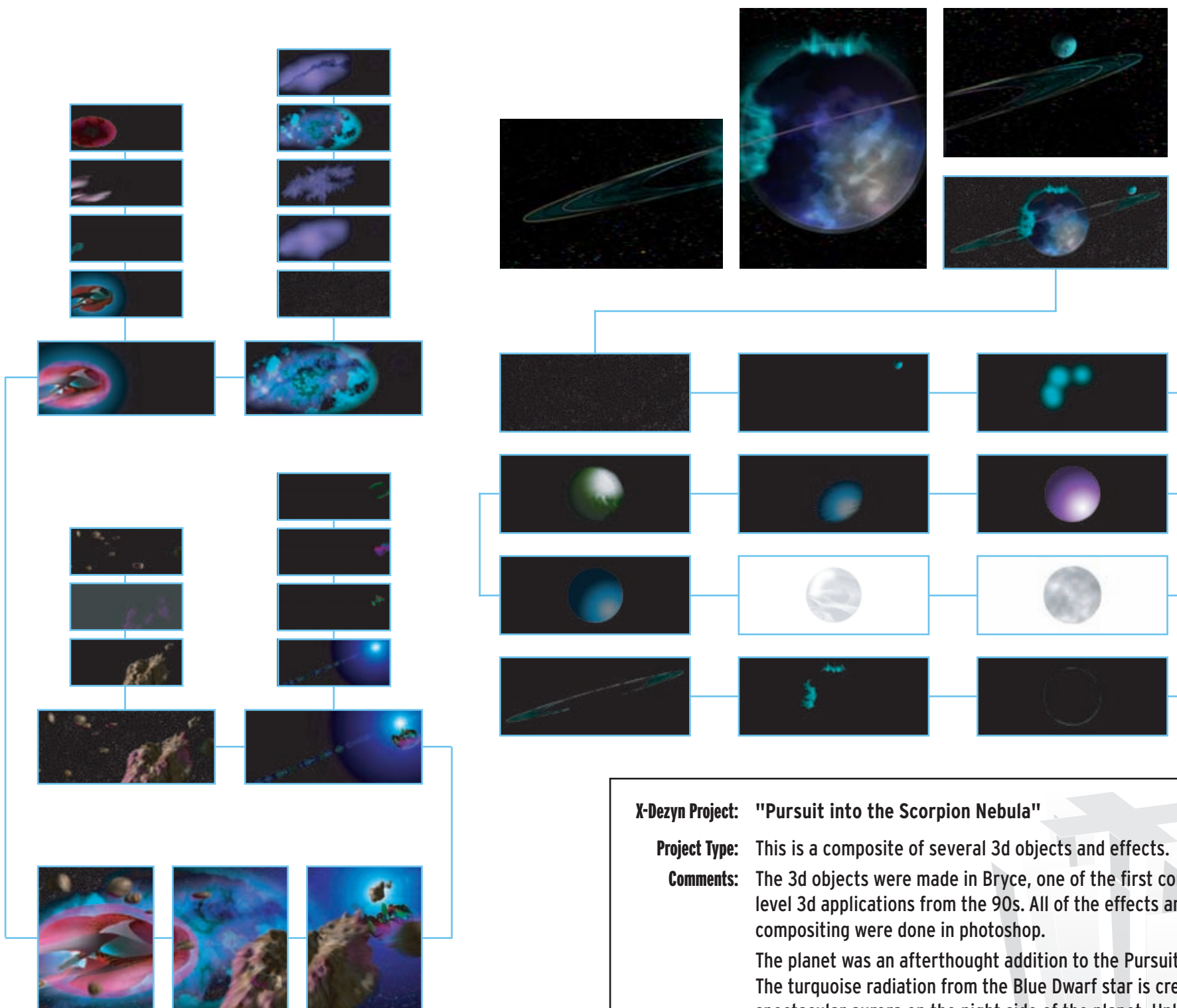
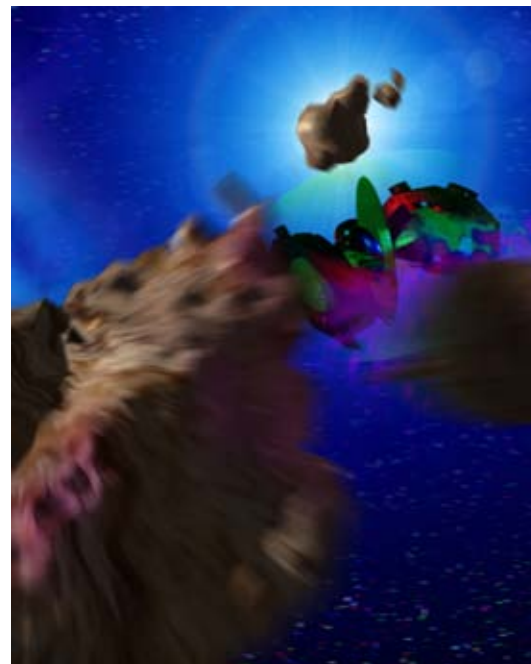
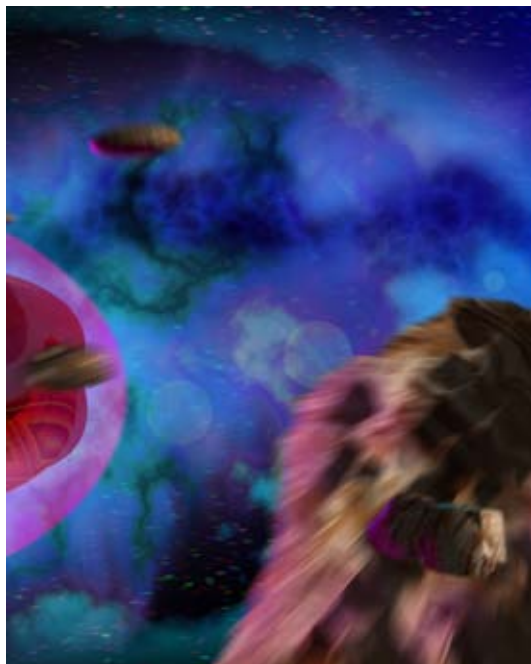
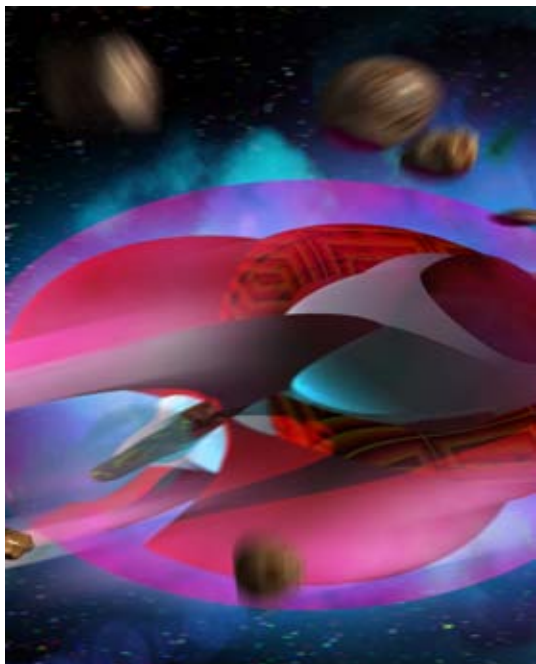
$$\left(\text{Image 1} \times .1 \right) + \text{Image 2} + \text{Image 3} + \left(\frac{\text{Image 4} \times \text{Image 5}}{2} \right) \times \text{Image 6} = \text{Result}$$



X-Dezyn Project: "Reveal"

Project Type: Photoshop compositing

Comments: A combination of "Glamour" photography and digital manipulation creating a scene of the subjects skin being revealed from behind an apparent coating of sand. A lucky placement of a plaster crack resulted in her right eye being recolored to match the sand and it created the interesting contrast between the gritty sand and her clear skin and bright blue eye.



X-Dezyn Project: "Pursuit into the Scorpion Nebula"

Project Type: This is a composite of several 3d objects and effects.

Comments: The 3d objects were made in Bryce, one of the first consumer level 3d applications from the 90s. All of the effects and compositing were done in photoshop.

The planet was an afterthought addition to the Pursuit piece. The turquoise radiation from the Blue Dwarf star is creating spectacular aurora on the night side of the planet. Unlike the Pursuit scene, this was not created in a 3-d program, rather hand (mouse) painted in photoshop.

The red party

attend the
25th birthday of
Tu H. Le

enjoy
grilled food
champagne
wine
beer
cocktails

June 15th 2002 at 7:00pm
3204 porter st.
Bremerton, wa 98312

360.782.4124



**DON YOUR CAPE & CELEBRATE
RAY & KIRK'S BIRTHDAY WITH A**

CAPE PARTY

Kirk "Evil Jester" Hanson
Ray "Golden Horn" Gomez

**CAPED PUB CRAWL
JULY 28TH | 8:30PM | BARCA**

EVERYONE ATTENDING WILL WEAR A CAPE OF THEIR OWN CHOOSING. WHETHER IT IS MADE OF A TOWEL, BUBBLE-WRAP OR TAFFETA, COME READY TO FLY.

THOSE WEARING CAPE'S WILL GET FREE BEER AT SOME OF THE BARS PLUS IT IS JUST GOOD MANNERS TO WEAR ONE.

WE WILL START THE CRAWL AT BARCA, BUT WILL CONTINUE ON TO SOME OTHER LOCATIONS.

"Sweet Baby" Ray Gomez "Handsome" Kirk Hanson

That was then...

Check 'em out now!

"Handsome" Kirk Hanson (turning 29)

SATURDAY, JULY 30TH

ROLLERSKATING 7-9 pm
Southgate Roller Rink
in West Seattle
9646 17th Ave SW
Seattle, WA

"Sweet Baby" Ray Gomez (turning 34)

FOOD AND DRINK 10-12 pm
Elysian Brewery
1221 E. Pike St.
Seattle, WA

Other venues will be considered if that pair is either chops not required...but encouraged!

Tu H. Le invites you

to participate in a night of Bacchanalian Festivities
Come have fun & celebrate Tu's 26th Birthday

Saturday, June 14th 2003 - Appetizers, Music, Drinks, Good Friends - Under a full Moon

No gifts please - Bar will be hosted
Call 360.782.4124 or 360.440.1175

April 24th · 9:30pm

tuhle's JOINT

hosted bar · deep house

Thanks: Jeremy, Judah, Kevin, Torin, Willis, Dustin & Adam
For more info call 360.440.1175 or email tuhle@mac.com

102 NW 36th St · Seattle
Private Party - Invite Only

CLEVER DUNNE'S PRESENTS

BYOV

Bring Your Own Vinyl

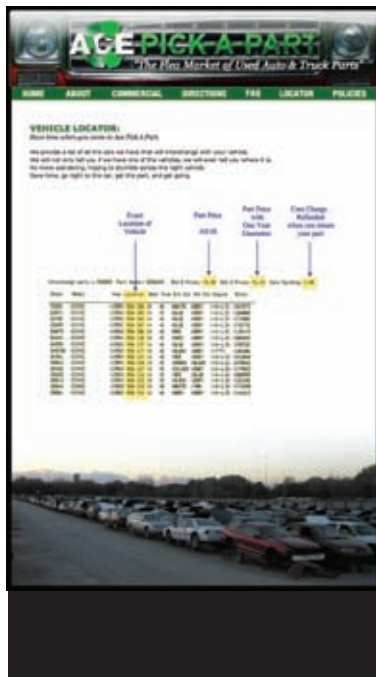
Every First Wednesday, show off your taste by bringing in your favorite records. Rare, Deep Cuts or Just Plain Good! You bring it, Jeremy will play it.

July 6th | August 3rd | September 7th

9pm - 12am No Techno Please

X-Dezyn Project: Flyers and Invites

Comments: These were fun diversionary projects that let me be a bit more creative. I don't charge for these because they are excersizes in design that let me step a little outside the more conservative business items.



Old Logo



X-Dezyn Project:



Project Type: Logo & Website

Comments: My goal was to create a simple, distinct and versatile brand for use in both web and print. The Chef running was the first incarnation, but then I put him in a car to better denote the travel. many scenarios followed, mainly fueled by the different pages on the website. The client has gotten many positive comments on his brand.